

A vibrant tropical beach scene featuring two tall palm trees on either side of a white hammock strung between them. The hammock is empty and hangs over a clear, turquoise ocean. In the background, a small boat is visible on the water. To the right, a portion of a thatched-roof hut and a yellow lifebuoy are visible. The sky is a clear, bright blue.

DCOTA

the
— SUMMER —
LOOKBOOK

NEW, NOTABLE & SEASONALLY-INSPIRED DESIGN RESOURCES

ISSUE 5 | SUMMER 2019



AURORA FOLDING SCREEN
AVAILABLE AT HOLLY HUNT

TABLE OF CONTENTS / DCOTA SUMMER LOOKBOOK

S1. INDOOR / OUTDOOR

FURNITURE
FABRICS
KITCHENS
RUGS

S2. FABRICS / TEXTILES / WALLCOVERINGS

S3. RUGS / FLOORING

S4. ACCENTS & ENHANCEMENTS

ACCESSORIES
SHADING
HARDWARE
LIGHTING

S5. LIVING SOLUTIONS

KITCHENS
CABINETRY
CLOSETS
FURNITURE
THEATRE

S6. LOOKBOOK ARCHIVES / DESIGNER REMINDERS

S7. RESOURCES / SHOWROOM CONTACT INFO

indoor / outdoor

furniture
fabrics
kitchens
rugs

AIR BY VITEO / AVAILABLE AT INSIDE OUT



indoor / outdoor • furniture

CENTURY FURNITURE **tangier**

BY RICHARD FRINIER

Tangier's distinctive forms with arched Moroccan design details are accentuated with an artfully hand-woven and open-weave pattern. Its modern appeal is infused into each memorable piece summoning you to unwind in a spectacularly faceted crescent-shaped and endlessly configurable modular lounge with coordinating woven or teak occasional tables creating the ultimate resort-at-home destination for lingering, entertaining, and relaxing.



century furniture suite b-228

BELTEMPO USA

coral bank

We can define them as the bones of our oceans. They still give us a feast of colors and solid protection from big waves. Strong and beautiful as our CORAL BANK sofas range, designed by Marco Sangiorgi, this sophisticated seating solution adds a touch of grace to any outdoor space.





indoor / outdoor • furniture



DEDON tibbo

Renowned British designers Edward Barber and Jay Osgerby created TIBBO for an era in which indoor and outdoor living spaces are merging. DEDON's first collection in teak, TIBBO combines meticulous craftsmanship, superior comfort and remarkable lightness in a design that's distinctive, elegant and pure. Comprising both dining and lounge elements in a mix of teak, textiles and woven fiber, TIBBO conveys an exceptionally rich and luxurious look and feel.

dedon suite c-120



INSIDE OUT

air

VITEO

The AIR collection offers the ideal solution for all who want to extend their living area to the outside - not only in the urban area. The flexible building system of the collection allows to create personal solutions according to your own taste. The combination of Corian® and stainless steel ensures durability; the fabrics in a variety of textures complement the elegant, streamlined design. Designed by Rasmus Falkenberg.

GLOSTER

atmosphere

BY CECILIE MANZ

For the Atmosphere collection, Danish designer Cecilie Manz has drawn from observing couples, groups, friends and families interacting in seating areas - sliding down low in comfortable furniture, tucking up legs, resting side by side as stories are told and moments are shared.



indoor / outdoor • furniture

JANUS ET CIE butterfly II

The Butterfly II collection is defined by its delicate, pretty wings that create a curvy silhouette in its various iterations: armchair, lounge chair, and 2- and 3-seat sofas. Created with woven synthetic materials, these classic forms are given a new, durable identity, making them ideal for indoor and outdoor environments.





INSIDE OUT

moon//alu

TALENTI

The Moon dining armchair offers a wide and welcoming seat with a light ropes braiding creating the seat and the backrest. Together with the dining table, it creates a soft and elegant atmosphere. Structure in aluminum covered with a braiding of ropes in grey synthetic fabric.



indoor / outdoor • furniture



DEDON

mbrace dining

MBRACE brings cocooning comfort, iconic style and a modern material mix of teak and fiber to the outdoors. Sebastian Herkner's award-winning collection takes its name from the welcoming gesture of the seating, which wraps users in a cozy embrace. Now available in Baltic, Sea Salt and three other colorways, MBRACE comprises a full range of dining and lounging elements, including new coffee and side tables with handcrafted ceramic surface patterns.

dedon suite c-120



indoor / outdoor • furniture



GLOSTER **sway**

BY HENRIK PEDERSEN

With Sway, the Danish designer Henrik Pedersen has combined a finely proportioned teak frame with a practical sling seat and back to deliver inherent sprung comfort despite an extremely minimal profile.

gloster suite c-114



INSIDE OUT

the ribot chair

ETHIMO

The Ribot chair designed by Marc Sadler, in a lounge version complete with footrest. Knit, the iconic bergère, produced in collaboration with Patrick Norguet, becomes a rocking chair with a traditional feel, yet refined modern look.



indoor / outdoor • furniture

DEDON **brixx**

The award-winning BRIXX modular system, DEDON's first fully upholstered collection, is now more versatile, functional and luxuriously comfortable than ever. Four new modules — all with fixed backrests — have been added to the collection's original lineup of three backless sofa modules, offering unlimited possibilities for configuring BRIXX to any setting, outdoors or in.



dedon suite c-120



indoor / outdoor • lighting

GLOSTER ambient ray

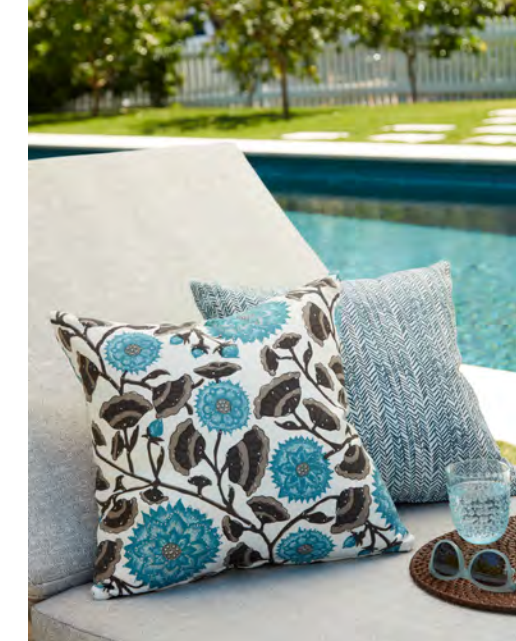
Like the beams of sunlight breaking through gatherings clouds, the Ambient Ray lantern both illuminates and inspires. Expertly crafted from fine sections of rounded teak and topped with a natural leather handle, this striking, yet practical outdoor light is the perfect addition to any outdoor space.



gloster suite c-114



indoor / outdoor • fabrics



JOHN ROSSELLI & ASSOCIATES **printed outdoor**

PETER FASANO

Peter Fasano's collection of eclectic and colorful fabric prints are now available as Outdoor. The company has pioneered new methods of hand-printing that results in a printed acrylic fabric that is UV resistant and water/stain resistant. Any Peter Fasano pattern can be ordered as Outdoor for no additional charge.



SCHUMACHER indoor/outdoor linen

Schumacher's Indoor/Outdoor Linen collection is unlike any other. Made with real linen, you'll never guess these remarkable and wonderfully soft fabrics can resist fading, moisture, stains and mildew! With stylish and versatile patterns, these wovens are at home both outdoors and in.



indoor / outdoor • kitchens



INSIDE OUT

adapt

VITEO

Going back to the roots, cooking in a space full of life, enjoying the pure joy of outdoor cooking. The unique outdoor kitchen combines sink, teppanyaki and grill, and creates completely new possibilities for the pleasure of outdoor cooking. The modular ADAPT outdoor kitchen opens up a whole new world of possibilities.

inside out suite b-216



THE RUG COMPANY

endurance

PERENNIALS

Inspired by Desert Modernism and the architecture of Palm Springs, The Endurance Collection embraces a lifestyle where the boundaries of indoor and outdoor are blurred. Soft to the touch but robust and resilient, this collection was designed with The Rug Company's signature attention to colour and pattern while using the unique Perennials manufacturing technique to produce a highly durable product. Fade and stain resistant, each flatweave rug is handmade by skilled artisans using Perennials' yarn, which, thanks to its innovative 100% solution-dyed acrylic technology, means that the colours permeate the yarn to the core. Should an accident happen, these rugs are incredibly easy to clean at home, guaranteeing that the rug will stay as vibrant as the day it arrived.



fabrics
textiles
wallcoverings

WATSONIA WALLCOVERING
AVAILABLE AT PIERRE FREY



fabrics / textiles / wallcoverings



DONGHIA star power

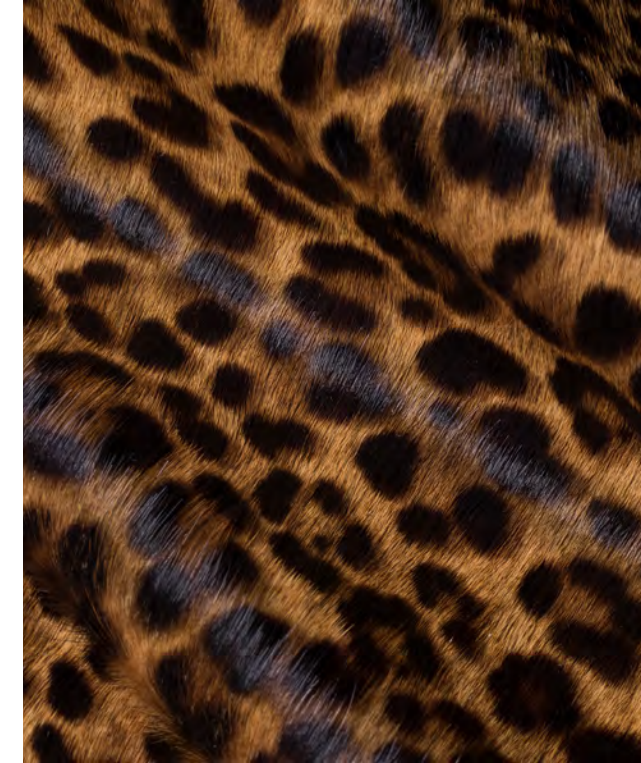
HINSON by Donghia

Shoot for the stars with Hinson's STAR POWER Collection! Dramatic patterns and intriguing weaves create stand-out schemes which are colorful and touched with surprise. All designed to mix and match in a snap. STAR POWER Collection gives designers just the right product to do their most impactful work. Boom!

donghia suite c-250



fabrics / textiles / wallcoverings



EDELMAN LEATHER

cavallini

Add fun, flair, and high energy to any surrounding with Cavallini hair-on hides. Available in subtle neutral and natural hues, as well as statement-making colors, Cavallini stands apart from the herd.



HOLLY HUNT

the aspen collection

GREAT PLAINS

Come along with us for a long hike through the mountains. Lie down and look up through a canopy of birch trees. Run your hands along the bark of a fallen log. Notice how a stream sparkles in the noon-day sun. The sights and the wonders of nature are brought to life in the latest fabric offerings from Great Plains - The Aspen Collection. The color palette, rich and saturated colors alongside whites and warm neutrals, is inspired by the natural landscape of Aspen. Rich in texture and pattern this collection ranges from true workhorse upholsteries to stunning novelty items.



fabrics / textiles / wallcoverings



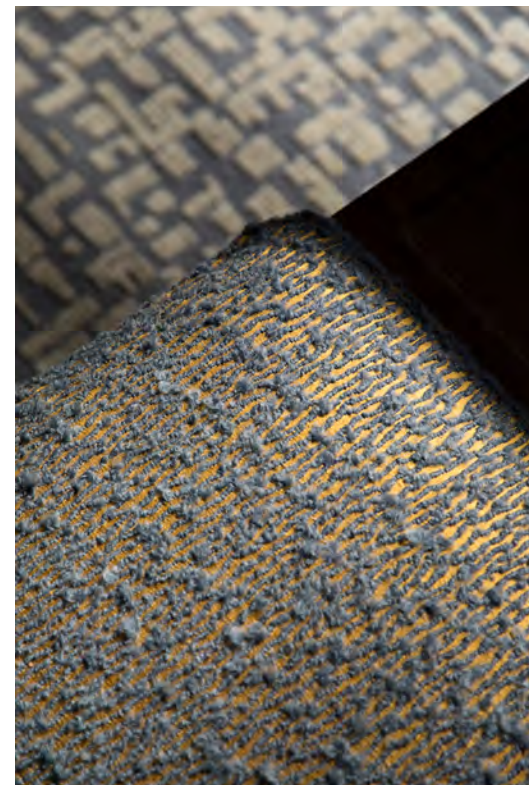
AMMON HICKSON

jane shelton

Be inspired by Jane's fresh blue palette and neutral patterns! The chair (left) is upholstered in free flowing "Swivel Blues," the walls are upholstered in a versatile stripe "Crest Blue," and the drapes are in snappy "Signal Stripe Blues." The chair (top) is upholstered in cotton boucle "Paws Beige/Brown," the walls are upholstered in versatile woven stripe "Crest Neutral," and the drapes are in a free flowing design "Swivel Neutrals/Brown."



fabrics / textiles / wallcoverings



HOLLAND & SHERRY

docere

For over 180 years, Holland & Sherry has produced exquisite textiles, from tailored and refined to rugged and versatile. For 2019 we present dOCERE: a glimpse into the heart of the artist. Meaning “to teach,” dOCERE illustrates our diversity of process, materiality, and a freedom of expression that transcends the bounds of warp and weft. Conceptual, abstract and tactile, this collection of handwoven and hand-painted textiles is an opportunity to design without sacrifice, and to connect the pure spirit of creativity to decoration.



COWTAN & TOUT

jane churchill

Jane Churchill introduces a fresh yet striking Eastern-inspired collection that has a strong emphasis on color and pattern. Designs include vibrant prints, diverse weaves and intricate embroideries. Colors are fresh and modern for relaxed decoration with lively flair.



AMMON HICKSON

heather rosenman

KERRY JOYCE

A renowned ceramic artist, the Archetype Heather Rosenman Collection combines a primitive aesthetic with modern sensibilities inspired by her ceramic forms, surface designs and ancient systems of writing. Ancient, contemporary and futuristic relics are surviving memorials of culture. Heather is obsessed with the relationship of symbols and sees written language as art, and has designed a collection of textiles for Kerry Joyce that reflects her affinity and passion for these ancient symbols. All designs are printed on 100% Belgian linen. The collection consists of 6 designs in 6-8 colors, each uniquely original.



HOLLY HUNT

the cyclades collection

GREAT OUTDOORS

The Cyclades Collection, inspired by the group of Greek islands, southeast of the mainland in the Aegean Sea. The beaches, rugged landscapes and traditional blue-and-white stucco towns are reflected in the color palette. Designed with the HHO collection in mind, all textiles pair seamlessly with the offered finishes making it easy to bring a little bit of Greece to your next project!



fabrics / textiles / wallcoverings

PIERRE FREY **jalapao**

This exotic floral pattern is inspired by the colorful lianas, the vine-like trees characteristic of South African forests. This black and white drawing comes straight from the artist's sketchbook. The colored version of this design is Pachira, each available as wallpapers or perfectly coordinated fabrics.



pierre frey suite b-101



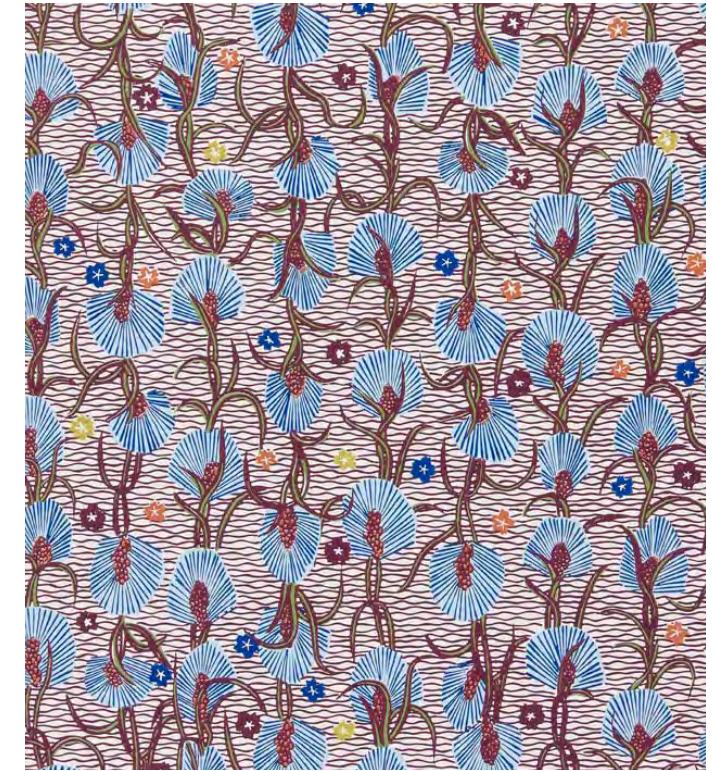
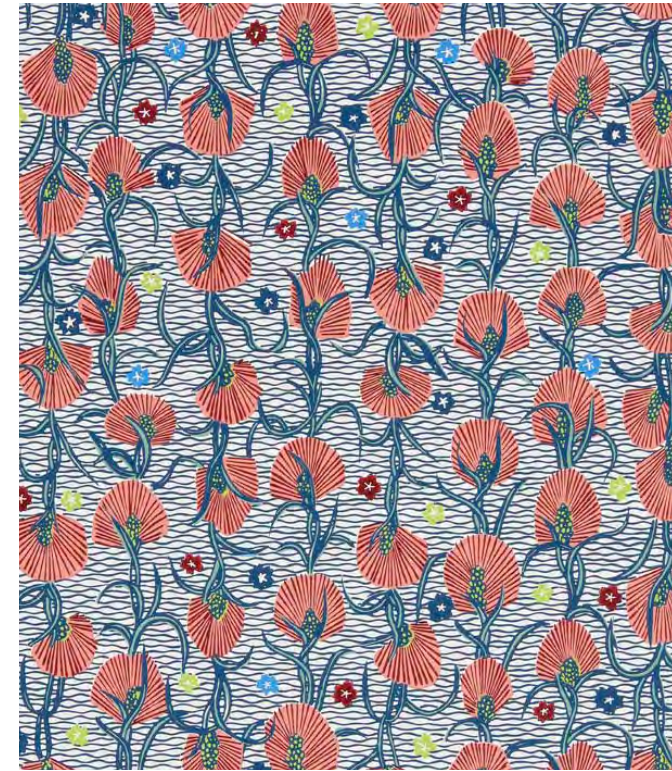
ROMO casenove wallcoverings

ZINC TEXTILE

Introducing a cultured collection of digitally printed silk wallcoverings. Natural in appearance and texture, the pure, slubby nature of raw silk gives an individuality and appealing, tactile quality to each design. Versatile plains and semi-plains work together with architecturally influenced designs; abstract pyramids and interlocking rectangles sit alongside modern marble and on-trend ombré.



fabrics / textiles / wallcoverings



PIERRE FREY
watsonia

This floral pattern evokes the different varieties of the South African Watsonia flower. The hand-painted cylindrical print enhances the original design. Available in three colorways.

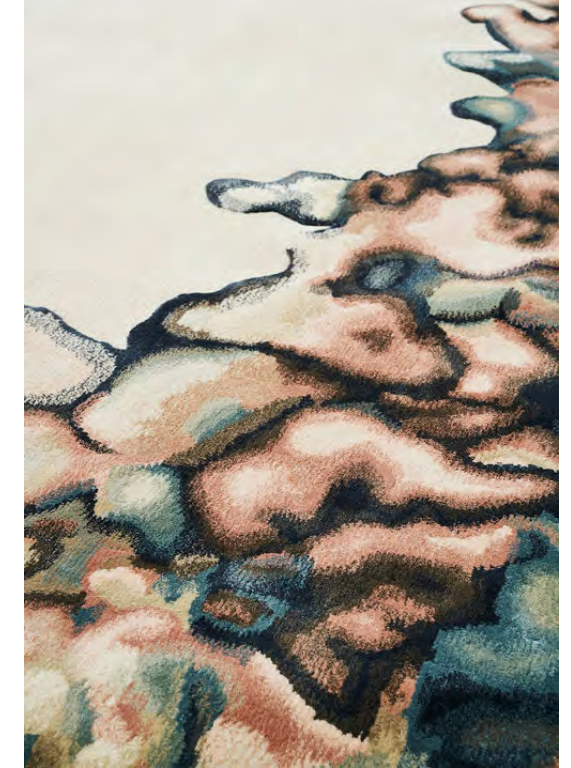
rugs / flooring



GRUNGE CONCRETE / TILE & MARBLE COLLECTION



rugs / flooring



TAI PING **tides**

Inspired by the mystery and magnificence of the sea, Tides uses wool, silk, and just enough lurex to shimmer like the ocean in the sun. These nine hand-tufted designs are based on original watercolors and utilize a palette of clean pastels and contrasting metallic tones.

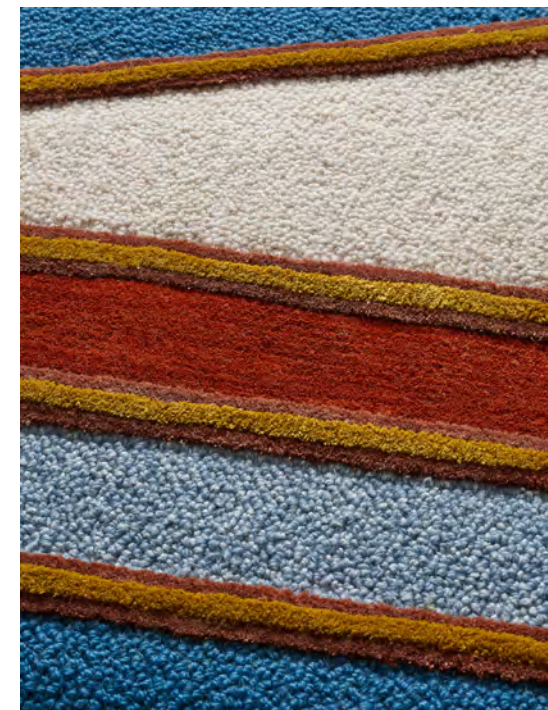
tai ping suite c-228



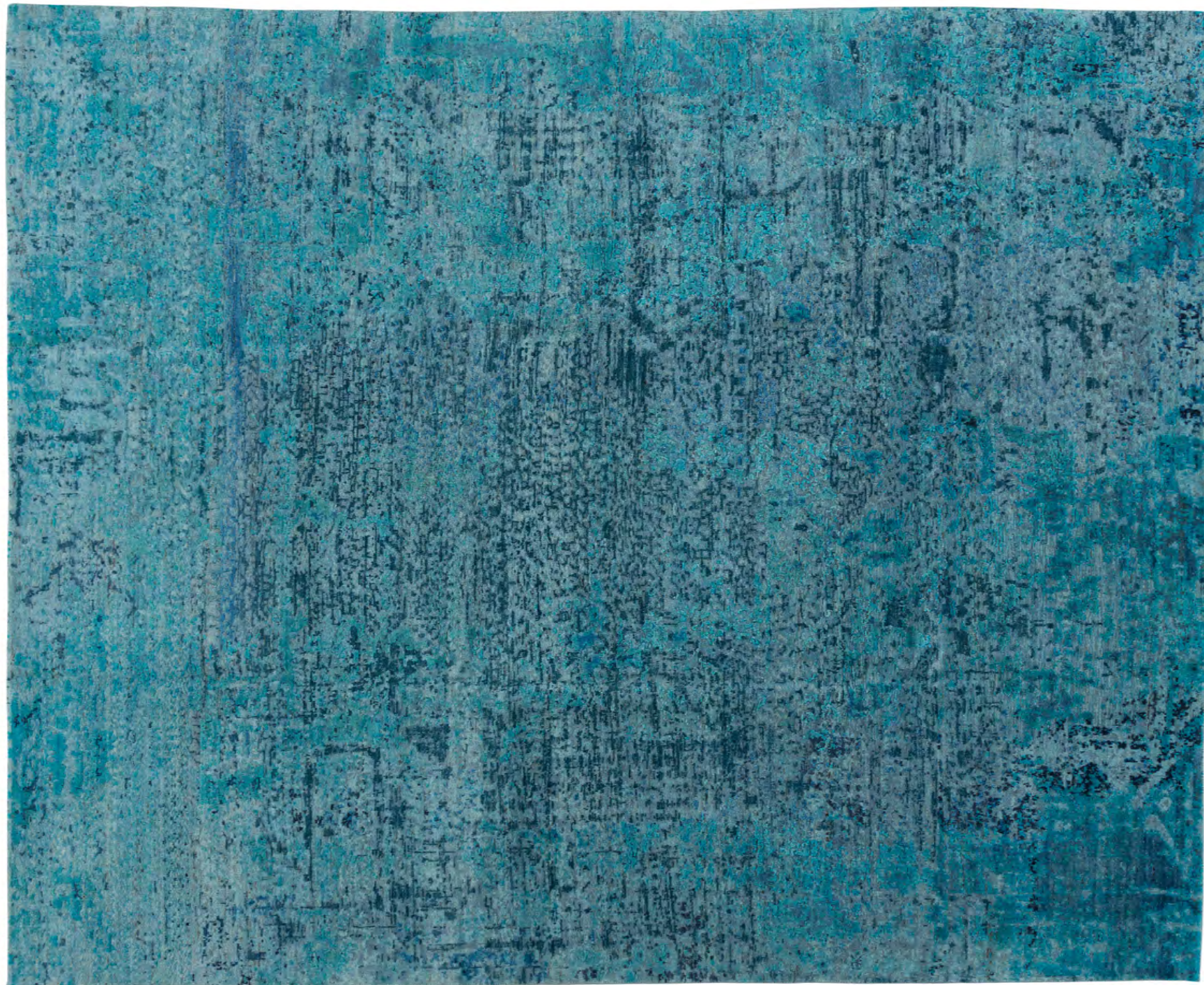
rugs / flooring

PIERRE FREY
hissa rug

Inspired by an old African handcraft rug, this design is composed of graphic lines accentuated through the use of varied pile heights of botanical silk cut pile against a background of looped pile made from New Zealand wool.



pierre frey suite b-101



rugs / flooring



CARPET SOURCE **sculpted collection**

Over the ages, water, wind and ice have sculpted the surface of the earth into fascinating patterns and textures. This collection pays tribute to those forces and the art they have created in the world around us.

carpet source suite c-200



rugs / flooring



EDELMAN LEATHER

cowhide rugs

Our cowhide rugs are fun, easy, and full of joy — just like our best days and our best selves. Find the perfect combination of natural beauty and playful imagination with choices ranging from tie-dye to screen-print to bold natural markings. Explore our exceptional, one-of-a-kind hair-on hide cow rugs.



rugs / flooring

CARPET SOURCE **nouvelle spectrum**

Nouvelle Spectrum was inspired by kintsugi, the art of repairing broken pottery with gold, silver, or platinum. With their continued use, these repaired pieces develop a patina that broadens their color palettes and gives them infinitely more depth and character. Nouvelle Spectrum celebrates the beauty inherent in the making of these repairs and the gift of the object's usefulness over time, recreating its effect via the sheen of bamboo silk.

carpet source suite c-200

TILE & MARBLE COLLECTION

grunge concrete

Hyper-realist inspiration suggested by urban cement damaged by use and by the passing of time. Cracks, fissures, peeling. Scratched concrete. Games of marks and light. Graffiti-like decorations. Black, white, light grey, greige, dark grey. Walls and floors merge unusually.

flooring



tile & marble collection suite c-312



CARPET SOURCE

urban fresco

These silk and wool rugs command rapt attention. With their intricate and utterly unique textures, they echo the power of time-worn frescoes. By painstakingly creating varying pile heights of silk and wool, our artisans have deconstructed the essence of beauty and conjured a collection that stands above and apart.





accents & enhancements

accessories
shading
hardware
lighting

TIMELESS ELEGANCE COLLECTION
AVAILABLE AT WIRED DESIGNS



accents • accessories

HOLLY HUNT
**aurora
folding
screen**

DESIGN MCCOLLIN BRYAN

The Aurora Folding Screen has subtle hues of colored resin set into a handcrafted, polished brass asymmetrical frame. Produced in a Limited Edition of eight (8) per color, customizable for your environment.



holly hunt suite c-126



accents • accessories



THE RUG COMPANY

luke edward hall accessories

London based artist, illustrator and designer, Luke Edward Hall, has collaborated with The Rug Company for a new collection of three playful cushion designs, each handcrafted in wool crewelwork and two wall hangings handmade in wool Aubusson, reflecting Luke's signature style in a romantic palette.

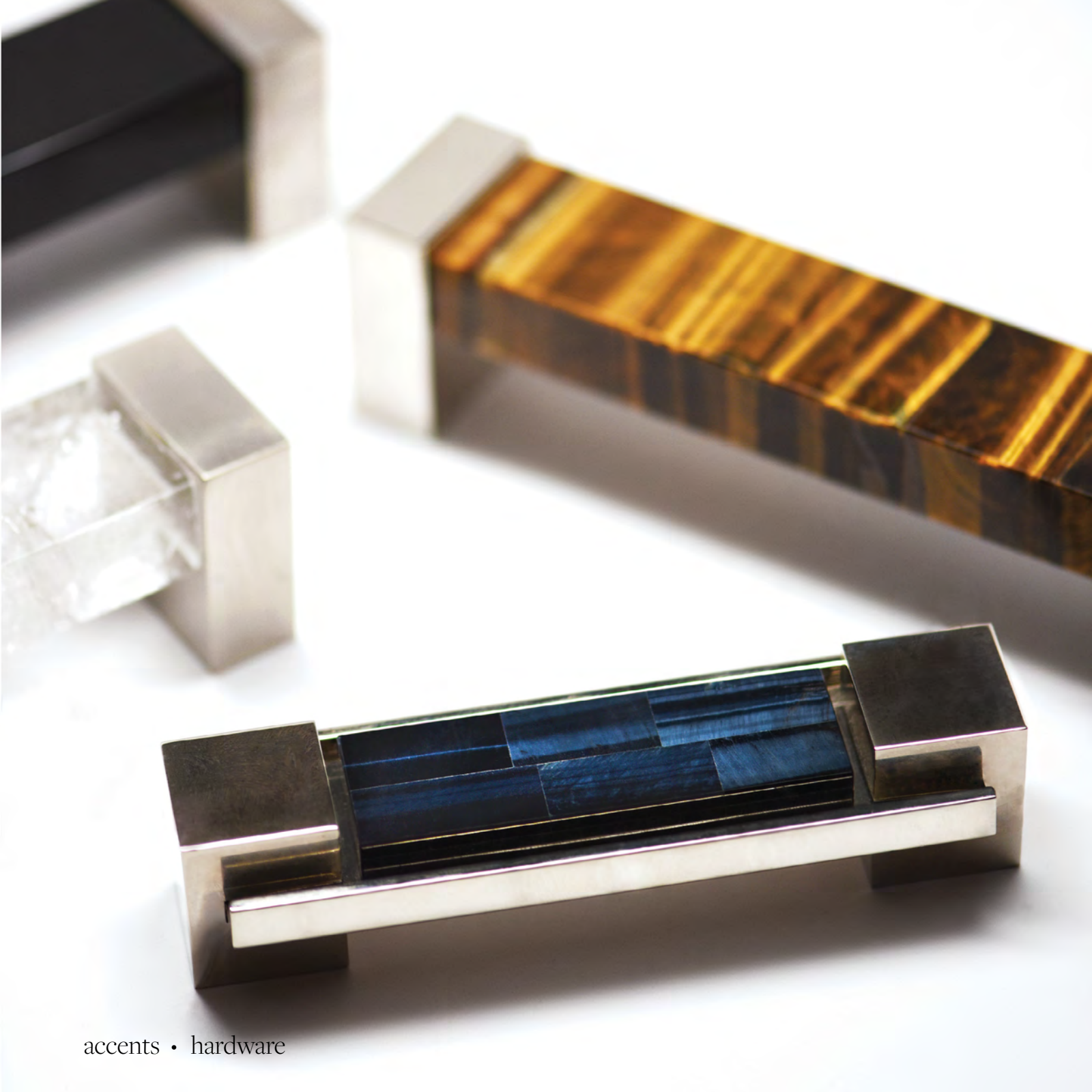
the rug company suite c-116



THE SHADE STORE

lafayette + brackets

Made to look finished from any angle, our new French Return Drapery Hardware, Lafayette, instantly elevates every interior — available in three finishes. Sleek and stylish, our new Square Brackets give windows a modern, architectural touch — available in seven finishes.



accents • hardware



SHERLE WAGNER
INTERNATIONAL

apollo

Our Apollo Collection is sleek and sophisticated, highlighting the beauty of semiprecious stones. The Apollo Collection is available in twenty-two metal finishes and with optional semiprecious stone, onyx or metal inserts.



THE SHADE STORE

alexa hampton

Perfect on its own or layered with Drapery, this Designer Collection features subtle small-scale patterns and soft finishes for a hint of modern elegance — available in four patterns and six colors.



THE SHADE STORE

naomi rollers

Let light filter in softly through these minimalist-inspired styles, crafted with the look and feel of fine linen — available in eight colors for Light Filtering Roller Shades.



WIRED DESIGNS

timeless elegance

Our Timeless Elegance Collection mixes various high style historical references. The Agosto, a Murano glass Venetian-style chandelier, is comprised of hundreds of 24k gold infused piastra leaves. The tailored Oxford pendant celebrates thoughtful architectural details; and the gracious Broad is beautifully composed of white art glass and reflective metal.



tailor - made
living
solutions

kitchens · cabinetry · closets
furniture · theatre · home tech

POGGENPOHL +segmento y

With +SEGMENTO Y, Poggenpohl is creating a stunning reinterpretation of a current collection. The kitchens are matte instead of glossy, with new nanotech surface technology to prevent fingerprints.





EGGERSMANN KITCHENS HOME LIVING

summer vibes

What better time to add color and vibrance to your kitchen than Summer? Keep it minimalistic and subtle, mixed with natural materials, then go bold with your color accent. Our client adores purple, which is extravagant, passionate, and royal. Eggersmann offers an infinite amount of custom colors. What color represents you? Find a way to incorporate color into your home.



SIEMATIC **urban style**

SieMatic's URBAN style collection is characterized by unconventional, individual, and freestanding space utilization concepts. The Stone Grey kitchen in a satin matte lacquer with an anti-fingerprint coating features an indoor herb garden recessed into the countertop so you can add the freshest ingredients to your recipes. The unique bar solution pays homage to the legs of the SieMatic dining table.



HANS KRUG

tropical modern

Hans Krug is modernizing the traditional South Florida homes by introducing the new chic finishes and door styles that define South Florida. In this tropical modern Floridian kitchen, Hans Krug has paired champagne matte finish cabinets adorned with hand-painted gold trim with glass cabinets to contrast the tropical setting. Plunge into the modern world of European-made cabinetry.



FLORENSE tech kitchen

The Tech Kitchens are characterized by a horizontal gap between the doors and the tops of the cabinets, where aluminum profiles are used, providing an exclusive design. All side panels are covered with an extra closing panel.



living solutions



EGGERSMANN KITCHENS HOME LIVING

green with envy

The eggersmann experience does not end with cooking. Bring the sophistication into all aspects of your home while lounging, resting, playing, and pondering. Our expectation is that our custom-designed furniture makes your reality easier and adaptable to your lifestyle. Experience eggersmann Home Living luxury solutions throughout your contemporary home.

eggersmann kitchens home living suite c-262



SIEMATIC

elegant entertaining

This elegant SieMatic bar space is perfect for entertaining, featuring nickel drawers, illuminated shelves and Eternal Marquina on the counter and backsplash. Pocket doors in wood veneer cleverly conceal the bar for a sleek, continuous look.



SIEMATIC

multimatic interior accessories system

Maximize kitchen storage space by 30 percent with the SieMatic MultiMatic interior organization system. The flexible system includes frames in various widths and depths that are attached to the SieMatic multifunction track to optimize storage space. The sophisticated interiors feature elegant aluminum trays lined in rich woods.



FLORENSE

flowall closet

All Florense closet collections stand out for the high technology used in their construction and fixation systems - without drilled holes - which allows custom solutions for any kind of project. There are two closet options: one with wall panels, and another option without wall panels. Every project can be customized using the several accessories options available.

FLORENSE **flowall** **sliding doors**

This exclusive system does not require the use of rails on the floor, which allows for customized solutions for any kind of project.

The doors can be made totally in wood, or use aluminum frames around glass or wood panels; these panels can be either built-in or overlapping. The doors slide smoothly and silently and use soft-closing dampers.





BAKER milling road

Milling Road's Spring 2019 Collection comprises 52 casegoods and upholstered pieces designed for contemporary casual lifestyles. Feminine and masculine silhouettes combine seamlessly in distinguished oaks, honed Carrara marble and sculptural bronze surfaces. With a fresh new look and story, the collection reflects classic forms interpreted through a modern lens.



TODAY'S CUSTOM DESIGN

superyacht interiors

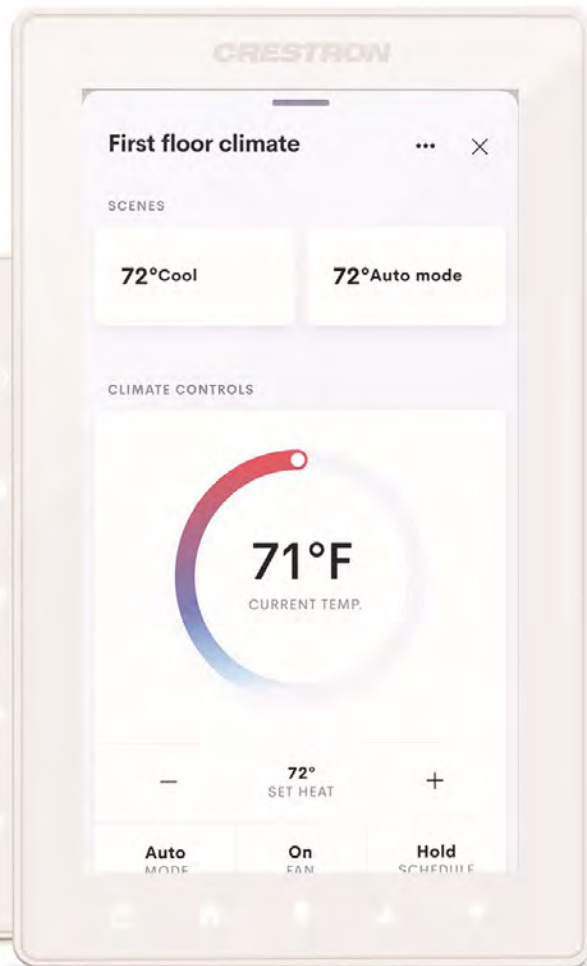
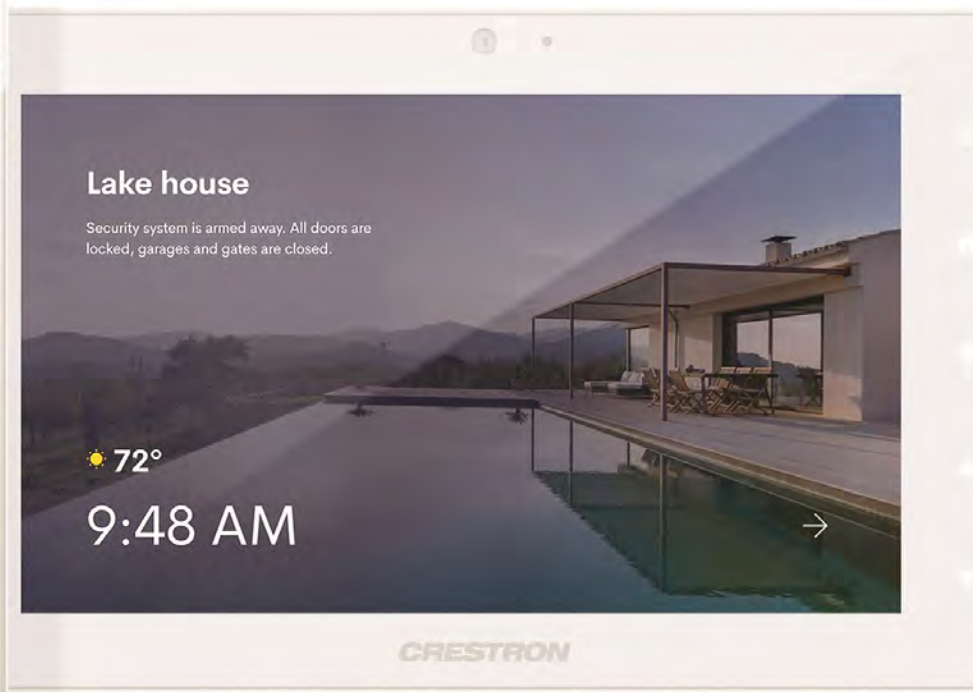
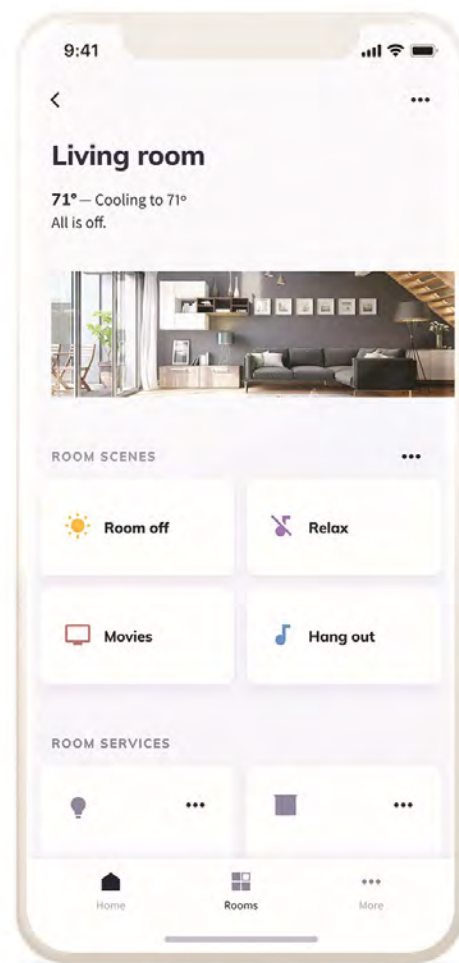
Jaime Perczek's furniture and interior design experience are perfectly displayed throughout these exquisite yacht interiors. Each item has been selected to expand the owner's Art Deco vision for this \$30 million superyacht. Perczek coordinated the interiors remodeling and upper deck Skylounge addition as part of this one-of-a-kind project. A smart selection of finishes and fabrics are part of his unique signature style - from drapes and wall paneling, custom upholstery and built-in furniture, all coordinated to make this masterpiece a reality.



CINEMATECH

tailored seating design

Home cinema seating shouldn't be restricted to black or brown material. The CinemaTech experience includes the ability to tailor the look and feel to your design palette, creating a design as unique as you. Our Act 1 and Act 2 seating lines are made-to-order with endless options.



CRESTRON

crestron home os3

SMART HOME SOLUTIONS PERFECTLY TAILORED TO YOUR LIFESTYLE

There is a simple reason why Crestron is the undisputed leader of the smart home industry - we deliver the best user experience. Crestron is the one and only company that designs, manufactures and supports the full spectrum of smart home products and solutions to ensure unparalleled performance and reliability.

...and that's a wrap!
*we'll be back with
issue 6 this fall*

IN THE MEANTIME...
feel free to flip through
past issues of the
Lookbook for more
design inspiration



save the date for *fall market*
THURSDAY, NOVEMBER 7, 2019

designer reminders



COMPLIMENTARY
VALET PARKING
PROGRAM

FOR DESIGNERS &
ARCHITECTS

[LEARN MORE](#)



CAFFEINATE
AT CBAR

8:00 AM - 6:00 PM

ATRIUM C

Coffee / Hot & Iced
Espresso / Cappuccino
Salads / Sandwiches
Pastries + Quiche
Wine + Beer

RESOURCES

Ammon Hickson

B-240
ammonhickson.com
(954) 925-1555
info@ammonhickson.com
[@ammonhickson](#)

Baker

B-260
bakerfurniture.com
(954) 920-4565
robin.scheer@bakerfurniture.com
[@bakerfurniture](#)

Beltempo USA

C-358
beltempo-outdoor.com
(954) 681-4663
johnmeredith@beltempousa.com
[@beltempooutdoor](#)

Carpet Source

C-200
csowp.com
(954) 925-1303
arleem@csowp.com
[@carpet_source](#)

Century Furniture

B-228
centuryfurniture.com
(954) 929-5656
mnessen@centuryfurniture.com
[@centuryfurniture](#)

Cinematech

A-124
mycinematech.com
(972) 381-1071
ryan@mycinematech.com
[@cinematech_inc](#)

Cowtan & Tout

B-254
cowtan.com
(954) 920-1453
noelle_collins@cowtan.com
[@cowtanandtout](#)

Crestron Electronics

B-108
crestron.com
(754)-208-5100
jdossantos@crestron.com
[@crestron](#)

DEDON

C-120
dedon.de
(954) 299-0651
drew.duncan@dedon.us
[@dedon_official](#)

DONGHIA

C-250
donghia.com
(954) 920-7077
kgolov@donghia.com
[@donghia_inc](#)

Edelman Leather

C-272
edelmanleather.com
(954) 929-5000
bbates@edelmanleather.com
[@edelmanleather](#)

eggerrmann Kitchens Home Living

C-262
eggerrmannusa.com
(954) 342-4009
erika@eggerrmannusa.com
[@eggerrmann_usa](#)

Florense

B-112
florense.com
(954) 922-7384
marcio@florense.miami
[@florenseusa](#)

Gloster

C-114
gloster.com/en-us
(954) 832-5237
barbara.siciliano@gloster.com
[@glosterfurniture](#)

Hans Krug

C-230
hanskrug.com
(561) 409-2013
clara@hanskrug.com
[@hanskrugcabinetry](#)

Holland & Sherry

B-100
hollandandsherry.com
(954)-923-6656
manthony@hollandandsherry.com
[@hollandandsherryinteriors](#)

HOLLY HUNT

C-126
hollyhunt.com
(954) 342-9422
k.perazzo@hollyhunt.com
[@hollyhuntdesign](#)

Inside Out

B-216
insideoutfla.com
(954) 920-2010
info@insideoutfla.com
[@insideoutflorida](#)

JANUS et Cie

A-123
janusetcie.com
(954) 923-3350
jwood@janusetcie.com
[@janusetcie](#)

John Rosselli & Associates

A-128
johnrosselli.com
(954) 920-1700
melissa@jrosselliassociates.com
[@johnrosselliassociates](#)

Pierre Frey

B-101
pierrefrey.com
(954) 342-9760
joan.bijou@pierrefrey.com
[@lamaisonpierrefrey](#)

Poggenpohl

C-138
poggenpohl.com
(954) 923-2688
dcota@poggenpohl.com
[@poggenpohlkitchens](#)

ROMO

C-162
theromogroup.com
(954) 922-3970
info@romousa.com
[@romo_fabrics](#)

Schumacher

B-158
feschumacher.com
(954) 923-3112
kvanderhulst@fsco.com
[@schumacher1889](#)

Sherle Wagner International

C-166
sherlewagner.com
(954) 927-1212
debbie@sherlewagner.com
[@sherlewagnerinternational](#)

SieMatic

C-336
siematic.com/en/
(954) 923-3244
e.scirghi@siematic.com
[@siematicusa](#)

Tai Ping

C-228
taipingtent.com
(954) 923-4888
ericaseeger@taipingcarpets.com
[@taipingcarpets](#)

The Rug Company

C-116
therugcompany.com/us
(305) 576-9868
silvana.garrido@therugcompany.com
[@therugcompany](#)

The Shade Store

C-158
theshadestore.com
(954) 416-3161
jhenry@theshadestore.com
[@theshadestore](#)

Tile & Marble Collection

C-312
tmcdania.com
(954) 920-0666
nora@tmcdania.com

Today's Custom Design

C-172
perczek.com
(954) 925-0701
jperczek@aol.com
[@perczek](#)

Wired Designs

C-236
wired-designs.com
(954) 342-8710
george@wired-designs.com
[@wired_designs](#)

THANKS FOR BROWSING
let's stay in touch

join the list

follow us



DCOTA
DESIGN CENTER OF THE AMERICAS

1855 Griffin Rd, Dania Beach, FL 33004

www.dcota.com

[@dcotadesign](https://www.instagram.com/dcotadesign)